

## IN CASE OF FIRE

### UPON DISCOVERY OF FIRE

LEAVE FIRE AREA IMMEDIATELY.  
CLOSE DOORS.  
SOUND THE FIRE ALARM.  
PULL THE MANUAL STATION.  
LEAVE THE BUILDING BY THE NEAREST EXIT.

CALL THE FIRE DEPARTMENT  
DIAL **911**

### DO NOT USE ELEVATORS

### UPON HEARING FIRE ALARM

LEAVE THE BUILDING BY THE NEAREST EXIT.  
CLOSE DOORS BEHIND YOU.

### CAUTION

IF SMOKE IS HEAVY IN THE CORRIDOR, IT  
MAY BE SAFER TO STAY IN YOUR AREA.  
CLOSE DOOR AND PLACE WET TOWEL AT  
BASE OF DOOR.

IF YOU ENCOUNTER SMOKE IN THE  
STAIRWAY, USE AN ALTERNATE EXIT.

## REMAIN CALM

### FALSE ALARM

\* Everyone who willfully, without reasonable cause, in any  
MANNER, makes or causes to be made an alarm of FIRE  
is guilty of an offence. \* Criminal Code (Canada)

PROJECT:



87 BELLEVUE AVENUE  
TORONTO, ONTARIO, M5T 2N8

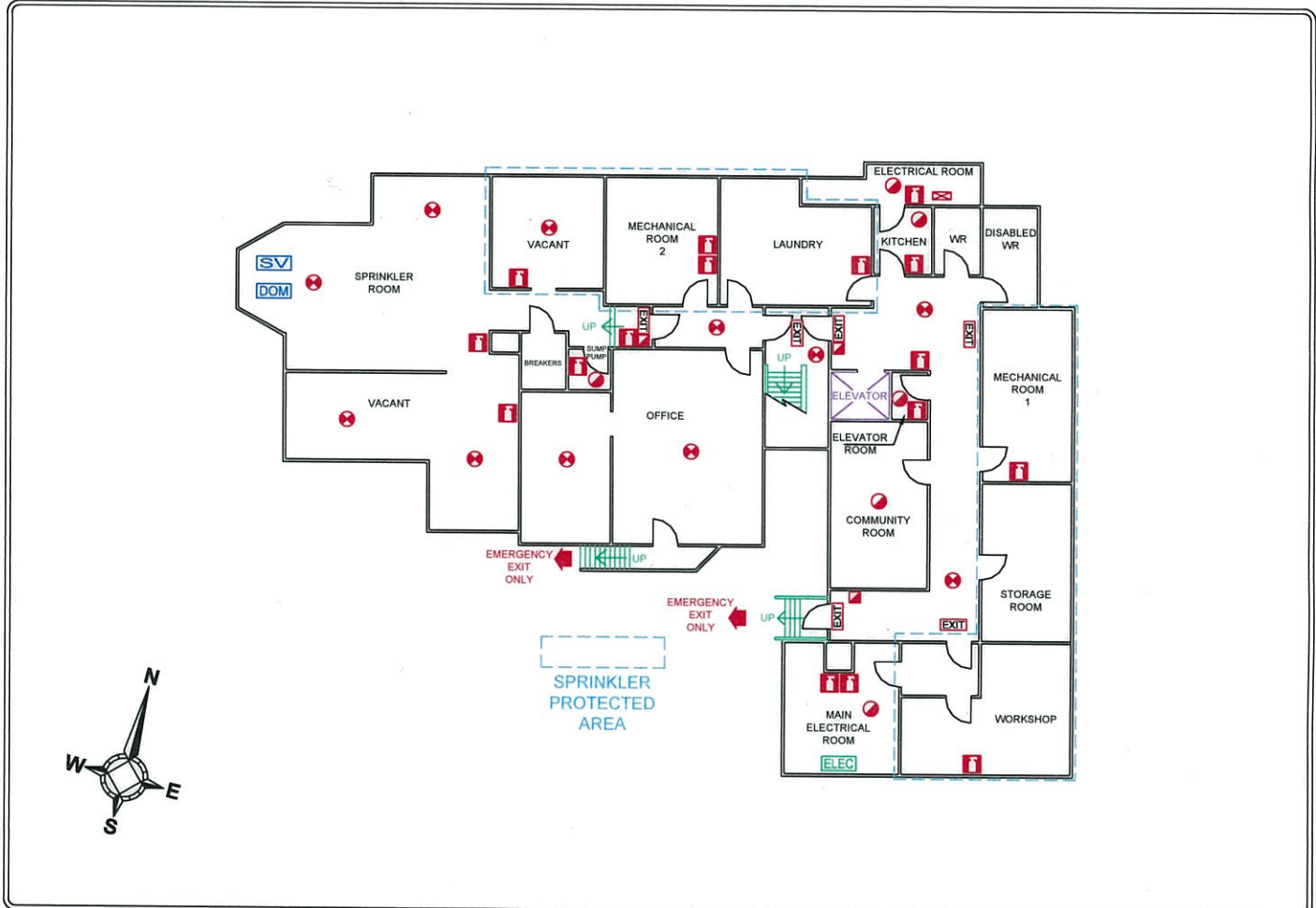
## FIREPOINT

Fire Safety Plan Development

27 - 180 Wilkinson Road, Brampton ON L6T 4W8  
PHONE: (905) 874-9400 FAX: (905) 874-9479  
EMAIL: info@firepoint.ca WEB: www.firepoint.ca

COPYRIGHT © FIREPOINT INC.

Permission is granted to create derivative schematics  
or reproductions of this documents' contents



### LEGEND

- FIRE EXTINGUISHER
- EXIT SIGN
- MANUAL PULL STATION

- DIRECTION OF EGRESS
- MAIN ELECTRICAL DISCONNECT
- DOMESTIC WATER SHUTOFF

- SMOKE DETECTOR
- HEAT DETECTOR
- SPRINKLER SHUTOFF VALVE

TITLE:		
<b>BASEMENT FLOOR PLAN</b>		
DRAWN: BT	SCALE: NOT TO SCALE	PROJECT NO: 13691
PROJECT DATE: OCTOBER 31, 2016	DWG REWORK PERMISSION: YES	
REVISION DATE: NOVEMBER 2, 2016	DRAWING NO:	
APPROVED DATE: MARCH 10, 2017		
		<b>2</b> OF 5